

Cooperman Frame Drums 2007/08



About Us

Cooperman hand drums start in the Vermont woods, where trees from native hardwood groves are carefully selected for their special bending characteristics, then milled and dimensioned using methods passed down through generations of sawyers and drum builders. We blend the traditions of solid, bent-wood drum shell construction with innovations inspired by leading artists to create our finely crafted rich sounding hand drums.

All of the drums in this brochure are hand-crafted by the Cooperman Company at our Vermont sawmill and woodshop. We always welcome requests for customized instruments, whether variations on the types and sizes listed here, or different instruments altogether.



Placing an Order

You can place your order or ask your questions by email to info@cooperman.com, or by fax to 802 463 4123, or by telephone to 802 463 9750. Our email is not encrypted; please do not send any credit card information with your order (see the section on making payments for details).

Paypal

Go to <https://www.paypal.com>. Click on on the tab "Send Money"; enter our email address: info@cooperman.com; the category selection is "goods, other"; enter the amount of the payment; notify us that you have sent a Paypal payment.

Credit Cards

We accept American Express, Discover, MasterCard, and VISA. Until our website is secured, please fax 802 463 4123 or call 802 463 9750 with your credit card information. Outside the United States, begin with international access code 00 and country code 1. Please include your name as it appears on the card; billing address (if different than shipping address); shipping address; telephone number; card number; and expiration date.

Since our email address is not encrypted, you should not email the information to us.

Returns:

We will accept back for full refund or credit any goods that have any defect in material or manufacture within 30 days of the invoice date. We will also accept back any goods which you find are not suitable for your needs within 30 days of the invoice date, provided the item(s) are not custom made; when you order a custom made item we will discuss with you the issues about potential returns. Other than in the case of a defective item, all returned items must be in like new condition, and you must bear the cost of return freight. Please contact us for return authorization prior to returning any goods.

Cooperman Company

1007 Route 121,
P O Box 821,
Bellows Falls VT 05101

Voice 802 463 9750
Fax 802 463 4123

Email: info@cooperman.com
On the Web: www.cooperman.com

©2007 Cooperman Company



Cooperman

Artist Information

ARTIST INNOVATION SERIES AIS

Our Artist Innovation Series (AIS) of instruments is comprised of selected drums whose creation is inspired and endorsed by these leading artists.

Glen Velez, a Grammy-award winning percussionist, is a seminal figure in the art of the frame drum, a celebrated international soloist, and a master teacher who conducts workshops worldwide. Glen creates his own vocabulary and compositional style inspired by his far-reaching study of traditional drumming techniques from cultures around the world. Website: www.glenvelez.com



Ganesh Kumar, a renowned proponent of the South Indian kanjira, is a Fulbright Fellowship recipient and has taught at Queens College, Julliard School of Music, Wagner College, The New School of Music, and United Nations International School. He is the featured percussionist with "Facing East", and has recorded with Bela Fleck, Victor Wooten, Jeff Coffin and others. Website: www.ganeshkanjira.com.



Jamey Haddad holds a unique position in the world of jazz and contemporary music. A respected teacher whose has been a recipient of a Fulbright Fellowship and four NEA Fellowships, Haddad's musical voice transcends styles and trends, and the universal quality of his playing has attracted many international collaborations. Jamey regularly works with Paul Simon, Dave Liebman, Paul Winter Consort, and Betty Buckley. Website: www.jameyhaddad.com



Houman Pourmehdi is a widely traveled and recorded percussionist and composer. Born in Tehran, he studied tonbak at the Center for Preservation and Propagation of National Music, and daf with the Ghaderi Sufi order. He founded the Society for the Advancement and Preservation of Traditional Persian Music introducing the unique sounds of Persian instruments to American audiences. His knowledge of traditional repertoire and his spiritual intimacy with the Sufism serve a very personal style of interpretation in his compositions and performance artistry. Website: www.lianrecords.com/pgs/houmanp



Randy Crafton, who works in a wide variety of styles and genres including world music, jazz, and new age, has served on the faculty at Berklee College, Julliard, Drummers' Collective and New York Open Center. He tours with Richie Havens, is active as a facilitator presenting workshops and master classes throughout the country, and is a producer with Craftone Production Studios/Kaleidoscope Sound. Websites: www.craftone.com and www.kaleidoscopesound.com.



Kobi Hagoel is a teacher, world stage performer, and drum designer born in Israel. His book *The Art of Middle Eastern Drumming* is acknowledged as a comprehensive exploration of the goblet and frame drum instruments, rhythms, and their context in the cultural diaspora. Website: www.kobihagoel.com



Hands On'Semble was created in 1997 by renowned percussionist John Bergamo, and has been described by *Modern Drummer* as "a stellar percussion group - extraordinary soloing, and extensive palette of sounds." Their repertoire of original compositions blends the rhythmic concepts and playing techniques of North and South India, the Middle East, West Africa, Indonesia, South America, and Western Chamber Music. Hands On'Semble members are Randy Gloss, Andrew Grueshow and Austin Wrinkle. Website: www.handsonsemble.com



N. Scott Robinson a leading American frame drummer, teaches at Towson University, Maryland. He is proficient on all styles of frame drumming and a wide variety of world percussion. Scott has composed 8 pieces for frame drums and has worked with Benny Carter, Malcolm Dalglish, and Paul Winter, among others. Website: www.nscottrobinson.com



International Artist Endorsers

We appreciate the support of our Artist Endorsers throughout the world

Ganesh Anandan
www.fingerworks.org

John Bergamo
www.talmala-bergamo.com

Barry Bernstein
www.healthysounds.com

Paolo Cimmino
www.paolocimmino.net

Scott Davidson
www.percussionmusic.com

Patrick Graham
www.patrickgrahampercussion.com

Carter Gravatt
(Carbon Leaf)
www.carbonleaf.com

Matt Kilmer
www.mattkilmer.com

David Kuckhermann
www.framedrums.de

Marla Leigh
www.marlaleigh.com

Joshua Levin
www.mythfits.com

John Marshall
www.marshalldrum.com

Aldo Mazza (*Répercussions*)
www.kosamusic.com

Sean McCann
(Great Big Sea)
www.greatbigsea.com

John Pennington
http://faculty.fortlewis.edu/PENNINGTON_J/

Judy Piazza
www.resonanceandrhythm.com

Todd Roach
www.theloftinbrattleboro.com

Chris Sampson
www.octagonalmadness.com

Jerry Steinholtz
www.jerrysteinholtz.com

Yousif Sheronick
www.yousifsheronick.com

Tom Teasley
www.tomteasley.com

Jingled Drums

We have interpreted a selection of jingled drums, rooted in many world cultures, that place emphasis on hand drum playing while embellishing the sound with jingles, rings, or pellet bells. All of these drums can be customized in a variety of ways upon request; custom orders may be differently priced.

All of our jingled drums share these features:

Our bent wood shells are hand made and turned here at our Vermont shop from the finest native hardwoods.

Our internal tuning technology preserves the traditional appearance of the instrument while allowing the player to maintain a complete range of motion, unencumbered by external hardware. A T-grip Allen wrench and tuning instructions are included.

Our removable jingle-pin technology allows alternative combinations of jingles. A palm size wrench and instructions are included. Ghalval rings and bells are not interchangeable.

A Cooperman signature padded soft case is included with each drum.

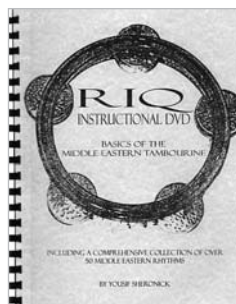
Artist Series Riq

This riq is a superbly balanced drum with design features that contribute to the player's control of jingle response. The 9 1/8" diameter of our turned hardwood shell enhances rich doum/drum sonority; the shallow 2 3/8" depth facilitates player grip, jingle access, and jingle control; the precision aluminum bearing/tuning edge on the wood body strengthens bright, articulated tak drum sounds and forward-balances the instrument. An optional set of hand hammered jingles may be specified (at additional cost) when a more shimmering jingle effect is preferred, or where emphasis on the percussive drum effect is desired (as when played in the "soft" position). We mount your choice of a traditional fish skin head or REMO® thin, bright WeatherKing head.

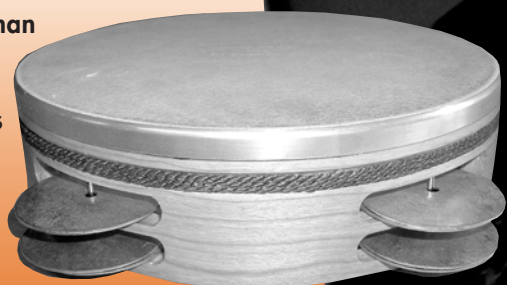
Please refer to the section on Shared Features for other specifications.

Artist Series Riq **\$234.00**

With Hand Hammered Jingles **\$282.00**



Yousif Sheronick's RIQ with Instructional DVD Basics of the Middle Eastern Tambourine **\$35.00**



Artist Series Riq

Hadjira AIS

This unique fusion instrument, conceived by Jamey Haddad, combines essential features of a kanjira, riq, and pandeiro.

Like a kanjira, this drum features a small diameter frame with a single set of jingles played primarily with the right hand, the left hand used for pitch blending.

Additional jingle slots are positioned on either side of the hand arch to accommodate riq jingles. A third jingle set is positioned at the top of the drum to accommodate pandeiro-style playing or shaking.

An additional set of "hadjingles" is included to extend the range of possible effects.

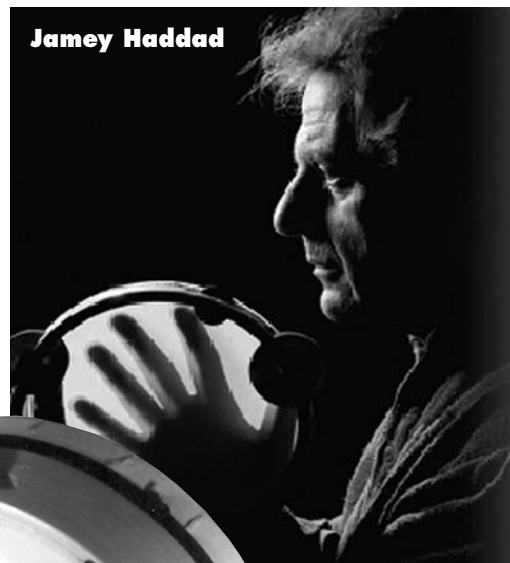
Our turned hardwood shell is 9 3/8" diameter, 2 7/8" high, with a precision cut bearing edge.

Remo®'s special cloth/mylar head is recommended. We secure the head into an exterior groove which is then covered with a colored knit cord, a design that minimizes the tendency of the head to pull away from the shell.

Natural skin heads are available upon request.

Please refer to the section on Shared Features for other specifications

Hadjira Drum **\$192.00**



Jamey Haddad



Hadjira

Judy Piazza

Kanjira **ALS**

The Kanjira is a relatively recent innovation, probably less than 100 years old, notably added to concerts of the Indian Carnatic music system as recently as the 1930's and then mostly as a supporting instrument for the Mridangam (the double headed barrel shaped drum). Today this small tambourine, with its unique sound and extraordinary tonal range, is widely popular and has an established voice of its own in jazz, fusion and world music.

Cooperman has collaborated with virtuoso South Indian tambourine player Ganesh Kumar to introduce a kanjira that



Ganesh Kumar

addresses the evolving role of the instrument, and that enhances the range and functionality of the traditional instrument.

Our steam bent hardwood shell is 7 7/8" dia. X 2 1/8" deep. With a distinctive barrel-section profile for comfort and balance, and a slightly larger diameter to accommodate western playing techniques, this evolved kanjira is fitted with a special REMO® cloth/mylar film that imitates the flexibility of the traditional, but now endangered, lizard skin. A custom designed copper jingle adds just the right cut.

Please refer to the section on Shared Features (see page 4) for other specifications

Kanjira Drum

\$155.00



Ghaval

Inspired by a style of drum widely found in Iran, Turkey, China, Azerbaijan, and Afghanistan, our Ghaval is designed to allow for both deliberate shaking sounds and light jingle sounds, with a bright high sound off the head whether played in the hand-held or on-the-knee position.

Our ghaval shell, a turned maple frame with a decorative exotic wood outer flitch, is 13 3/4" in diameter, 2 5/8" deep, 1/2" thick. This shell features a precision bearing edge, and a rolled bottom edge to reduce stress on the player's finger joints.

We've fitted our Ghaval with 24 brass rings, divided into 6 groups, each beginning and ending with a small pellet bell.

These rings and bells are mounted on small hooks so that they make contact with the wood shell, but not the head, and so avoid any unwanted buzz sound.

A half-moon arch cut in the shell at the 6 o'clock position allows for ease of play with both hands. This design also enables a stable grip for the less traditional

Ghaval



playing style, where the Ghaval is held flat (like a pandeiro) in one hand and shaken back and forth, so that the rings hit the inside of the shell in rhythm, while the drum is played with the other hand.

Remo®'s warm, responsive Renaissance head is recommended. We secure the head into an exterior groove which is then covered with a colored knit cord, a design that minimizes the tendency of the head to pull away from the shell.

Natural skin heads are available upon request.

Please refer to the section on Shared Features (see page 4) for other specifications

Ghaval Drum **\$240.00**

Dayereh

Our dayereh was developed with the guidance of Houman Pourmehdi, founder of the Society for the Advancement and Preservation of Traditional Persian Music. Inspired by the virtuoso playing and the spiritual heart of Sufi masters, this drum bridges our

Azerbaijani style ghaval and larger Persian daffs.

The shallow (2"), medium size (14 5/8" diameter) frame drum is distinguished by a single row of 36 light ring jingles, a sharp bearing edge, and an unusually steep bevel transitioning to a rolled interior profile.

The shell is steam bent hardwood, and is fully lathe turned on the interior (for a comfortable grip) and on the outside diameter (for precise thumb anchoring). A sharp bearing edge, facilitating exacting finger snaps and rolls, is paired with an expressive, warm REMO® Renaissance head.

Please refer to the section on Shared Features (see page 4) for other specifications

Dayereh Drum

\$252.00



Dayereh

Daff

A large (21") diameter Daff expands our range of Persian inspired tambourine drums. The large, shallow shell makes for a "big" drum sound, while an extensive complement of four interlocked, light brass rings are used to create an additionally big jingle effect. The shell can be shaken to create a variety of shaker rhythms and flourishes. When played with a rhythmic, gymnastic rolling style, the rings tilt forward to touch the skin creating a variety of scraping and buzzing effects. The narrow bearing edge combined with a thin REMO® synthetic head makes this drum surprisingly sensitive and precise for its size. The shell is steam bent hardwood, 21" outside diameter x 2 5/8" deep, and is mounted with a REMO® Renaissance or goatskin head; this daff is fitted with chains of interlocking rings (2 single rings stranded to a double ring).

Please refer to the section on Shared Features (see page 4) for other specifications

Daff Drum **\$298.00**



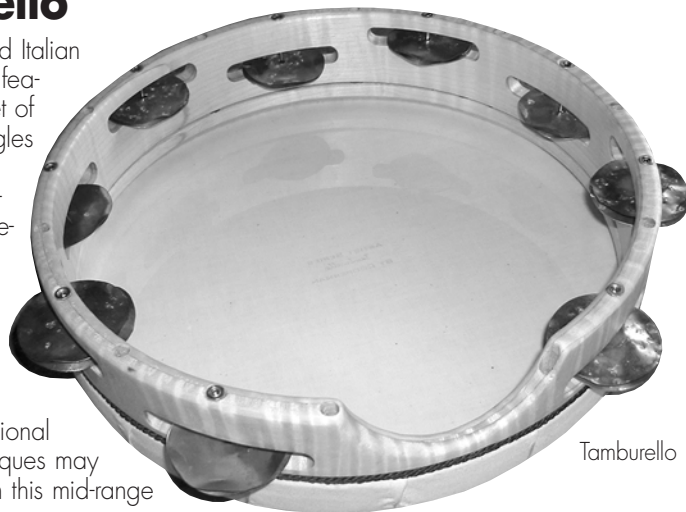
Daff

Tamburello

Our medium-sized Italian style tambourine features a unique set of hand cut, dry jingles paired with a loosely fitted synthetic head to create a drum that emphasizes a robust yet tinny-jingle dynamic on top of a forcefully played drum. Many regional tamburello techniques may be explored with this mid-range model, but typically the drum is gripped in the left hand and the right hand is used to produce fast, pivoting, triple-stroke rolls moving from the thumb to the side of the hand to a full slap. The drum is designed to be light in weight, with an arch grip, and the jingle slots staggered to emphasize continuous rolls. A REMO® synthetic head produces a warm sound with an excellent range of dynamics. Our turned hardwood shell is 11 7/8" outside diameter x 2 11/16" deep, with 9 pairs of heat treated, roughly hammered jingles.

Please refer to the section on Shared Features (see page 4) for other specifications

Tamburello **\$222.00**



Tamburello

Pandeiro

Our pandeiro is based on the traditional Brazilian style drum, played gymnastically with the finger pads and hand heel.

Our turned hardwood shell is 10 3/8" diameter, 1 7/8" high, with precision cut bearing edge.

Each of the 5 sets of cupped jingles are dampened with a flat jingle to create the traditional pandeiro's dry, lively sound.

REMO®'s cloth/mylar head is preferred. We secure the head into an exterior groove which is then covered with a colored knit cord, a design that minimizes the tendency of the head to pull away from the shell.

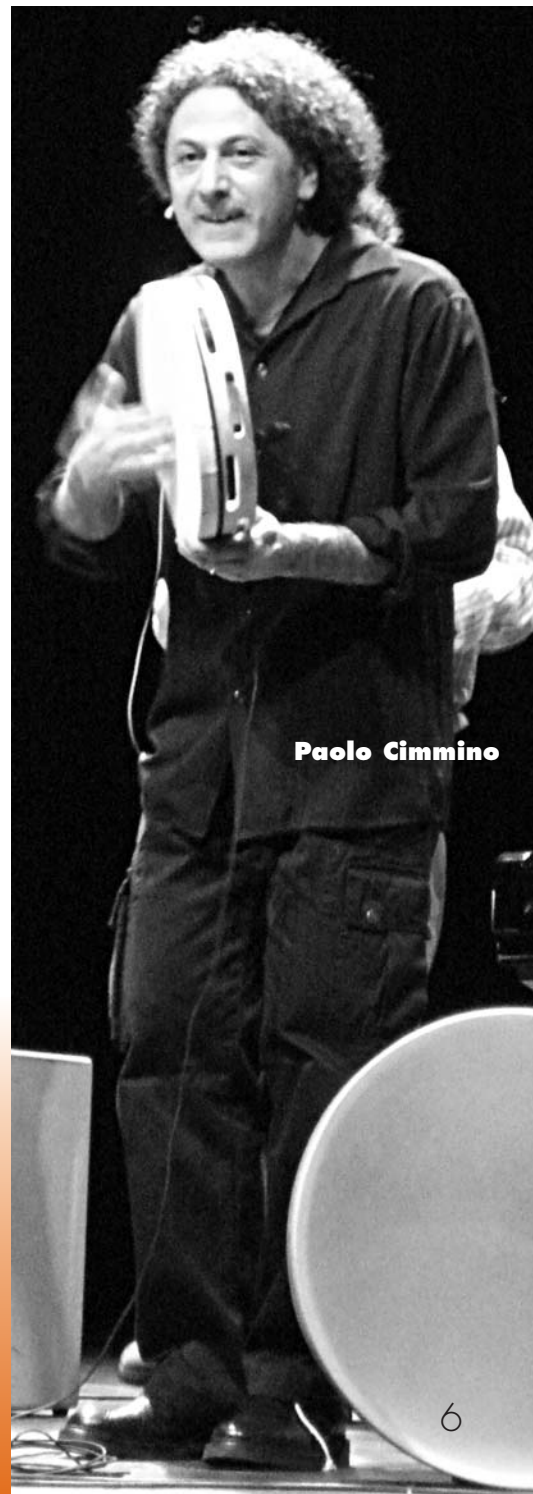
Natural skin heads are available upon request.

Please refer to the section on Shared Features (see page 4) for other specifications

Pandeiro Drum **\$192.00**



Pandeiro



Paolo Cimmino

Glen Velez Series

AIS

Velez Tuneable Bodhran Drums

The enhanced features of the Velez tars and bendirs are united with traditional features of the Cooperman bodhrans to create our Artist Innovation version of the traditional Irish drum. Slightly larger in diameter and depth than our standard frames, and featuring a thinner shell, this drum is designed to be especially light in weight, yet deep and rich in tone.

- Our 4 3/4" deep shell is made of solid, single ply cherry, steam bent and scarf jointed, and features a precision beveled bearing edge.
- The edge of the head is secured into an exterior groove, which is then covered with a colored knit cord. We designed this self-locking system to minimize the tendency of the head to pull away from the shell. This drum features a REMO® Renaissance head.
- Our patented internal tuning technology preserves the traditional appearance of the instrument and allows the player to maintain a complete range of motion, unencumbered by external hardware. Tension on the head is adjusted by the action of an internal, lightweight, moveable bearing member. A T-grip Allen wrench and tuning instructions are included.
- An easily removable, single crosspiece handle accommodates alternative playing techniques.
- Velez bodhrans are decorated with a cherry/boxwood inlay; a hand rubbed, natural finish accentuates the inherent beauty of the wood.
- A Cooperman signature padded soft case is included with each drum.

Velez Series Tuneable Bodhran

20" diameter **\$362.00**

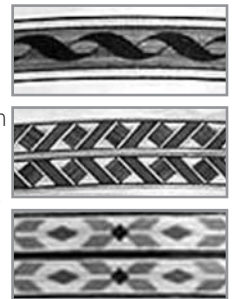
AIS

Velez Tuneable Tars and Bendirs

This series of individually hand made, high quality tuneable tars and bendirs is the result of our work with Glen Velez. These drums, part of our Artist Innovation Series program, have been designed to Glen's specifications and can be customized in a variety of ways upon request; custom orders may be differently priced.

Velez Tuneable Tars

- The Velez Series shell is 4 3/4" deep. Our solid, single ply ash shell, steam bent and scarf jointed, features a precision beveled bearing edge and a striking wood inlay in the light weight frame.
- The edge of the Remo® Renaissance head is secured into an exterior groove, which is then covered with a colored knit cord. We designed this self-locking system to minimize the tendency of the head to pull away from the shell.
- Our patented internal tuning technology preserves the traditional appearance of the instrument and allows the player to maintain a complete range of motion, unencumbered by external hardware. Tension on the head is adjusted by the action of an internal, lightweight, moveable bearing member. A T-grip Allen wrench and tuning instructions are included.
- Holding the instrument is made more comfortable and less fatiguing by the distinctive arch grip in the light weight shell, which is cushioned to soften the grip.
- Our overtone dampening system is featured on this drum.
- A hand rubbed, natural finish accentuates the inherent beauty of the wood.
- A Cooperman signature padded soft case is included with each drum.



Glen Velez



A Cooperman signature padded soft case is included with each drum."

Velez Tuneable Bendirs

- All the features of the Velez Tuneable Tar, with Remo®'s WeatherKing mylar head and no overtone dampening system.
- A simple braid of 4 fine dacron snares is threaded through the shell across the back of the drum head to produce the distinctive buzzing sound of the bendir. The player can adjust the tension on these snares, or release them entirely to eliminate the buzzing effect.

Velez Tuneable Bendirs

13" diameter **\$274.00**
15" diameter **\$287.00**

A Cooperman signature padded soft case is included with each drum.



**Marla
Leigh
with
Velez
Drum**

Velez ^{AIS} Mediterrasian Tambourines

Glen Velez designed this series of drums to explore a new context for some traditional instruments. The three drums clearly borrow their design heritage from the South Indian kanjira, the Italian tamburello, and the Spanish panderoa, but they are not intended to be traditional versions of those instruments. The jingle pattern and design features have been adapted to facilitate Glen's innovative, cross-influenced style of playing. In an accompanying booklet, Glen demonstrates the application of his Mediterranean style using hand movements drawn from traditional sources, but with the rhythmic ideas used, combined and shaped into a broadened context.

- Lathe-turned hardwood shells; precision turned bearing edge.
- Our internal tuning system preserves the traditional appearance while allowing the player a complete range of motion unencumbered by external hardware. A T-grip Allen wrench is included.

- The shells are scalloped between the jingle sets to reduce the weight and improve grip comfort and increase accessibility to the playing surface.
- Our removable jingle-pin technology allows alternative combinations of jingles.
- A selection of alternate jingles is included with each drum
- A Cooperman signature padded soft case is included with each drum.

Small: 8" diameter, 2" high, REMO® Weatherking, single row of 5 wood jingle sets **\$208.00**

Medium: 11" diameter, 2 5/8" high, REMO® Weatherking, double row of 5 nickel silver jingle sets **\$220.00**

Large: 13" diameter, 2 5/8" high, REMO® Renaissance, single row of 5 pandeiro jingle sets **\$232.00**



David Kuckhermann

Tuneable Bodhrans

Cooperman Original Shell Drums

Our handcrafted tuneable bodhran drums, inspired by Celtic traditional instruments, provide significant enhancements in material, design, and sound. All of our drums can be customized in a variety of ways upon request; custom orders may be differently priced.



Ganesh Anandan

- Our 4" deep shell is made of solid, single ply 5/16" hardwood, steam bent and scarf jointed, and features a precision beveled bearing edge.
- The edge of the head is secured into an exterior groove, with brass tacks in a wood flesh hoop. We designed this self-locking system to minimize the tendency of the head to pull away from the shell. This drum is available with a high quality goatskin head or a REMO® synthetic head.
- Our patented internal tuning technology preserves the traditional appearance of the instrument and allows the player to maintain a complete range of motion, unencumbered by external hardware. Tension on the head is adjusted by the action of an internal, lightweight, moveable bearing member. A T-grip Allen wrench and tuning instructions are included.
- Smooth, round dowels mounted about 2" from the head, firmly secured to prevent rattling, form the interior crosspiece handles.
- A hand rubbed, natural finish accentuates the inherent beauty of the wood.
- A Cooperman signature padded soft case is included with each drum.

Original Shell Tuneable Bodhran Drums

18" diameter **\$348.00**
22" diameter **\$394.00**



Cooperman Deep Shell Drums

We created our new Deep Shell Bodhran Drums in response to the evolving playing styles of today's most progressive percussionists. An exceptionally deep solid, single ply shell, a finely finished goatskin head, and a steep bearing edge, work together to produce a warm deep tone with a wide range of flexibility. Excellent for mic'ing and recording, the controlled overtones and full range of this drum, from crisp high notes to punchy bass tones, bring this instrument into the mix without being abrasive. This drum can be customized in a variety of



Carter Gravatt

ways upon request; custom orders may be differently priced.

- Our 6 1/2" deep shell features a precision beveled bearing edge.
- The edge of the head is secured into an exterior groove, which is then covered with a colored knit cord. We designed this self-locking system to minimize the tendency of the head to pull away from the shell. This drum is available with a high quality goatskin head or a REMO® synthetic head.
- Our patented internal tuning technology preserves the traditional appearance of the instrument and allows the player to maintain a complete range of motion, unencumbered by external hardware. Tension on the head is adjusted by the action of an internal, lightweight, moveable bearing member. A T-grip Allen wrench and tuning instructions are included.
- Our arm cut-out, an arch design with smoothly rounded edges, allows for comfortable access to the underside of the head; there is no cross-piece handle.
- A hand rubbed, natural finish accentuates the beauty of the wood.
- A Cooperman signature padded soft case is included with each drum.

Deep Shell Tuneable Bodhran Drums

14" diameter **\$465.00**



Bodhran Tipper (Cipin)

Roger's Tipper

A two-headed tipper with a streamlined profile and small, off-center grip. 9" long; both teardrop shape and knob shape head app. 13/16" dia.

In persimmon, avg. wgt. 1 oz. **\$10.00**

In rosewood avg. wgt. 1.5 oz. **\$15.00**



Tuneable Tars and Bendirs

Cooperman Tars and Bendirs

Based on traditional North African drums, our tars and bendirs have been developed in cooperation with leading artists to meet the demands of professional players, while maintaining the simple elegance of the traditional instruments. All of our drums can be customized in a variety of ways upon request; custom orders may be differently priced.

Tuneable Tars

- Our 4" deep shell is made of solid, single ply 5/16" cherry, steam bent and scarf jointed, and features a precision beveled bearing edge.
- The edge of the head is secured into an exterior groove, which is then covered with a colored knit cord. This design minimizes the tendency of the head to pull away from the shell. These drums are available with a goatskin head or a REMO® synthetic head
- Our patented internal tuning technology preserves the traditional appearance of the instrument and allows the player to maintain a complete range of motion, unencumbered by external hardware. Tension on the head is adjusted by the action of an internal, lightweight, moveable bearing member. A T-grip Allen wrench and tuning instructions are included.
- A smoothly rolled 1 1/4" thumb hole is strategically placed so that the drum is well balanced and comfortable in your hands.



Hands On'Semble

- A hand rubbed, natural finish accentuates the inherent beauty of the wood.
- A Cooperman signature padded soft case is included with each drum.

Tuneable Tars

- 14" diameter **\$220.00**
- 16" diameter **\$233.00**
- 18" diameter **\$252.00**



John Bergamo

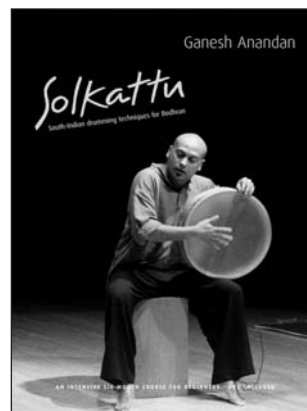
Tuneable Bendirs

- All the features of the Tuneable Tar
- A simple braid of 4 fine dacron snares is threaded through the shell across the back of the drum head to produce the distinctive buzzing sound of this Moroccan style bendir. The player can adjust the tension on these snares, or release them entirely to eliminate the buzzing effect.
- A Cooperman signature padded soft case is included with each drum.

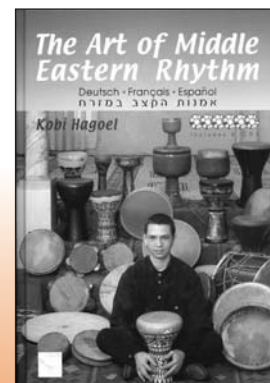
Tuneable Bendirs

- 14" diameter **\$238.00**
- 16" diameter **\$252.00**
- 18" diameter **\$272.00**

Books



Ganesh Anandan's Solkattu \$75.00



Kobi Hagoel's The Art of Middle Eastern Rhythm \$72.00



All prices subject to change without notice.

2008 NEW Cooperman Artist Innovations Model Drums:

Cooperman artist endorsers bring particularly innovative approaches to their performances and their teaching clinics. Our Artist Innovation Series of drums is designed to reflect the particular playing style and focus of some of these artists. Our *AIS* mark identifies the frame drums in this series.

N. Scott Robinson AIS Tars and Bendirs:

N. Scott Robinson, a leading American frame drummer, teaches at Towson University, in Maryland. He is proficient on all styles of frame drumming and a wide variety of world percussion. Scott has composed and published 8 pieces for frame drums and has worked with Benny Carter, Malcolm Dalglish, and Paul Winter, among others.

<http://www.nscottrobinson.com>.

NSR models are designed to be substantial in every respect, to deliver a deep, rich, maximum tone from frame drums at the far edges of our range of diameters.

NSR 12” Bendir

This small 12” diameter and 4.75” deep shell is crafted from a thick, single ply of steam bent Cherry. The tuning member is made from Ash to create a distinctive look and the 4 adjustable snares are black to enhance the visual presentation of the bendir’s characteristic buzzing feature. It is mounted with a very responsive REMO Weatherking head that has been scuffed.

\$238.00



NSR 14” Tar (Custom Orders) - 14” x 4.75”, Cherry/Ash, Renaissance head - \$252.00

NSR 22” Bodhran



This large 22” diameter and 4” deep shell is crafted from hefty 3/8” single-ply steam-bent Oak. The thick shell combined with wider, rounder bearing edge and warm REMO Renaissance head gives this model a substantial, bass frame-drum tone.

\$394.00

2008 NEW Cooperman Artist Innovations Model Drums:

Cooperman artist endorsers bring particularly innovative approaches to their performances and their teaching clinics. Our Artist Innovation Series of drums is designed to reflect the particular playing style and focus of some of these artists. Our *AIS* mark identifies the frame drums in this series.

Marla Leigh *AIS* Tar:

Marla Leigh is a Los Angeles based percussionist, composer and flautist who specializes in music from the Middle East, with frame drum being her main passion. She has released an instructional frame drum/darabuka DVD “Time Zone” with percussionist Ken Shorley. Marla leads her own world music ensemble as well as teaches and performs worldwide. Marla is currently working on her debut album, “Rhythms of Peace”, which will feature collaborations from her upcoming journey to the Middle East and North Africa. She has been blessed to study with master percussionist such as Glen Velez, John Bergamo, Trichy Sankaran, Poovalar Srinivasaan, Pandit Swapan Chauhdri , Randy Gloss and received a BFA, MFA in Percussion from Calarts. www.marlaleigh.com

The Marla Leigh Tar drum is designed to offer both introductory and advanced players a drum that easy to handle, and to provide effortless access to a variety of playing styles. The shallow depth (3.25”), mid-size (16” diameter) Cherry frame is expressive while being light in weight. Having both a unique, M-profile grip and a traditional thumbhole, enables a facile method for adjusting to varied playing styles. The distinctive graphics and shell color reflects the spirit and energy of Marla’s approach to frame drumming.

\$258.00

